

2019

# Tiguan



Volkswagen



# The not-so-compact, compact SUV.

Introducing the 2019 Tiguan. On the outside, powerful lines give it a style all its own. On the inside, thoughtful amenities abound. It's capable, comfortable, and ready to take on the city. And we back it up with America's Best Bumper-to-Bumper Limited Warranty. A 6 years, 72,000 miles, whichever occurs first, New Vehicle Limited Warranty.\*



\*6 years/72,000 miles (whichever occurs first) New Vehicle Limited Warranty on MY2018 and newer VW vehicles, excluding e-Golf. Claim based on manufacturers' published data on length and transferability of car and SUV Bumper-to-bumper/Basic warranty only. Not based on other separate warranties. See owner's literature or dealer for warranty exclusions and limitations.

Tiguan SEL Premium R-Line with 4MOTION shown in Pyrite Silver. Pyrite Silver later availability.



# A contemporary look that has no contemporaries.

A bold character line runs from front to back, conveying chiseled strength, while hood contours and a distinct grille deliver a memorable statement up front. On the inside, sharp modern styling creates an environment you'll never want to leave.



## **Hands-free Easy Open and Easy Close liftgate**

You don't need to lift a finger when you want to open the available hands-free Easy Open and Easy Close liftgate on your Tiguan. With key in pocket, kick your foot under the rear bumper to unlock and open the liftgate. To close using this feature, just walk away and it will shut automatically.

## **LED headlights with Adaptive Front-lighting System (AFS)**

These available headlights move with your turns to help you see what's ahead.

## **Vienna leather seating surfaces**

Available for the 1st and 2nd row, these seating surfaces feature a unique design and color options like Storm Gray or Saffrano Orange and Black.





### **Panoramic sunroof**

The available panoramic sunroof blends seamlessly into the cabin, letting in plenty of light as well as the outside world.



### **Versatile 3rd row**

It's refined. But it's also an SUV. And that means an available 3rd row that can carry some extra friends or, when folded flat, a lot of extra gear.

### **Cargo capacity**

We've given it plenty of cargo room, some 73.5 cubic feet in the 5-seater model when you fold down the rear seats.

### **AVAILABLE FEATURES**

- Leather-wrapped, multi-function heated steering wheel
- Climatronic® dual-zone automatic climate control
- V-Tex leatherette seating surfaces
- Heated front seats
- Remote start\*



Image shown for illustration purposes only; actual feature may vary.



# Horsepower. Torque. And a higher pulse rate.

Yes, it's stylish, sophisticated, and packed with comforts. But it's also quite capable. On a variety of roads and in challenging conditions, you can be confident and comfortable.







#### **Turbocharged engine**

Packing 184 horsepower, the turbocharged engine is a lot of fun. It's also fuel-efficient.

#### **4MOTION® all-wheel drive**

As conditions change, available 4MOTION distributes power between the front and rear wheels as needed to help optimize traction and stability.

#### **8-speed automatic transmission with Tiptronic® and Sport mode**

Having eight speeds can mean a smooth shifting experience. In Tiptronic mode, you can shift manually and take control of your driving experience.

#### **Active Control**

Available with 4MOTION, this feature lets you switch between driving modes just by turning a dial. Depending on the conditions, you can choose from On-Road, Snow, and Off-Road Custom. Both On-Road Mode and Off-Road Mode let you adjust the settings to fit your driving style.







# So much tech. So easy to use.

The Tiguan doesn't just come with technology; it comes with technology that's simple, useful, and designed to help improve the driving experience. The available VW Digital Cockpit is customizable, so you can display the information you want to see. You can also create up to four user profiles, each one able to remember things like your radio stations and preferred temperature, among others. If you have the available power driver's seat with memory, the Tiguan can even memorize your favorite seat position.



## Volkswagen Digital Cockpit\*

The available display is a true breakthrough. Instead of the traditional instrument cluster, information can be displayed digitally in high resolution.



## Wide Map Navigation View\*

You shouldn't get lost trying not to get lost. So the available wide map navigation view adjusts the size of the map, making it even bigger and more prominent.

## Driver Personalization\*

The Tiguan can store up to four driver profiles, remembering your personal preference for a wide variety of different settings and systems.

## Customizable views

You can customize the available display to better suit your driving needs, so information about navigation or your Driver Assistance features is displayed more prominently.



Image shown for illustration purposes only; actual feature may vary.

## Fender® Premium Audio System

Rock on. Or sing on with the available Fender Premium Audio System. A 480-watt amp and nine speakers give you concert-quality sound.

## VW Car-Net® App-Connect\*\*

VW Car-Net App-Connect allows you to connect your compatible smartphone with Apple CarPlay®, Android Auto™, or MirrorLink® to access select apps on the touchscreen display. From streaming music to mobile apps, it can be accessed on the touchscreen.

## 6.5" touchscreen sound system

Conduct your favorite music with features like Bluetooth® technology with audio streaming for compatible devices.

## 8" touchscreen navigation system

Besides looking great, the available sleek glass display helps make the map more prominent, while dynamic route guidance assists you with turn-by-turn information.



# Don't pass up a chance for peace of mind.

Driver Assistance features can help give you more confidence on your drive.



Tiguan SEL Premium with 4MOTION shown in Pyrite Silver. Pyrite Silver later availability.

## Forward Collision Warning and Autonomous Emergency Braking (Front Assist)\*

The available Forward Collision Warning (included in Front Assist) system can help monitor traffic and can alert you acoustically and visually to a potential front-end collision with the vehicle moving ahead. If it senses that a collision is imminent, Autonomous Emergency Braking (included in Front Assist) can support the driver with increased brake pressure or, under certain circumstances, it can apply the brakes automatically. The available Pedestrian Monitoring (included in Front Assist) feature can warn of pedestrians crossing in front of the vehicle and, under certain circumstances, can brake automatically to help prevent or mitigate the outcome of a collision with a pedestrian if the driver doesn't respond adequately to the warnings.

## Park Distance Control\*

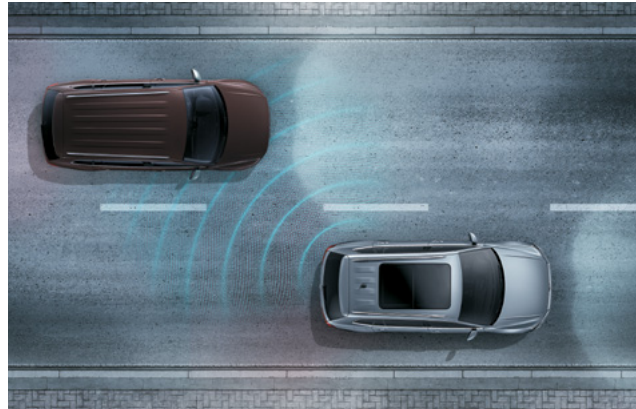
Available Park Distance Control has sensors that can help you back out of or drive into a parking spot. Audible signals and the optical parking system on the display indicate how much space you have behind and, on some vehicles, in front of the vehicle when parking. If you get too close, the system beeps as a warning. Maneuver Braking (included in Park Distance Control) can apply emergency braking force automatically to help mitigate and in best case prevent collisions with stationary obstacles while you maneuver the vehicle in reverse gear.





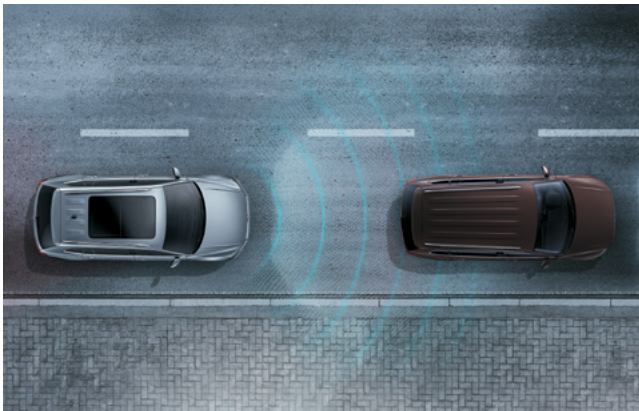
### Blind Spot Monitor\*

When driving, if you attempt to change lanes, the available Blind Spot Monitor can help alert you to cars that may be in your blind spot. The Active Blind Spot Monitor (available when vehicle is equipped with Lane Assist) on select models can also counter-steer within the limits of Lane Assist to help keep you in your lane if you attempt to change lanes when a vehicle is in your blind spot.



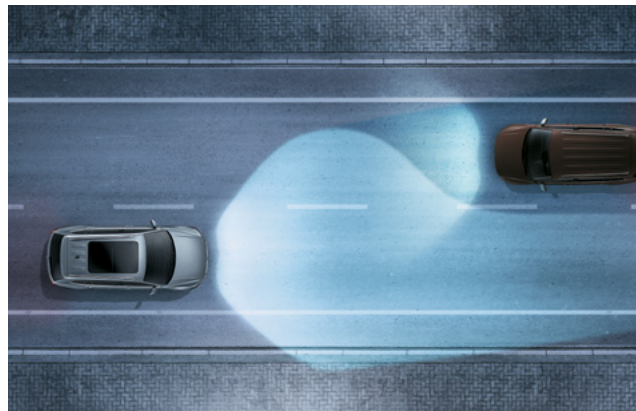
### Rear Traffic Alert\*

The available Rear Traffic Alert comes in handy when you're backing up. It has sensors that can alert you to vehicles crossing in your path when in reverse, and can even help brake the vehicle if needed.



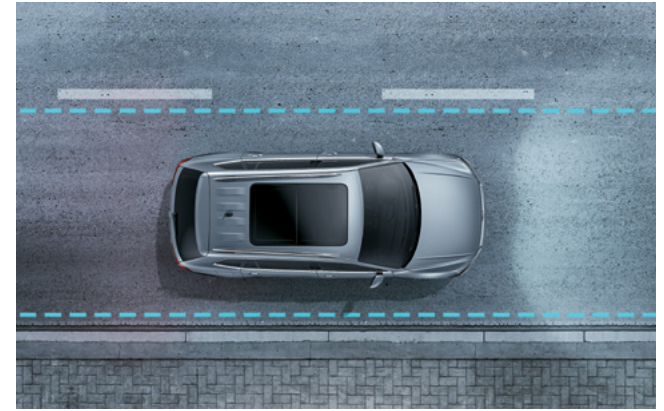
### High Beam Control (Light Assist)\*

Available High Beam Control (Light Assist) helps provide better visibility on dark roads by turning on your high beams at certain speeds. A camera mounted at the base of the rearview mirror turns your high beams on when conditions warrant it on dark or poorly lit roads. It then turns them off again if another car approaches or drives in front of you.



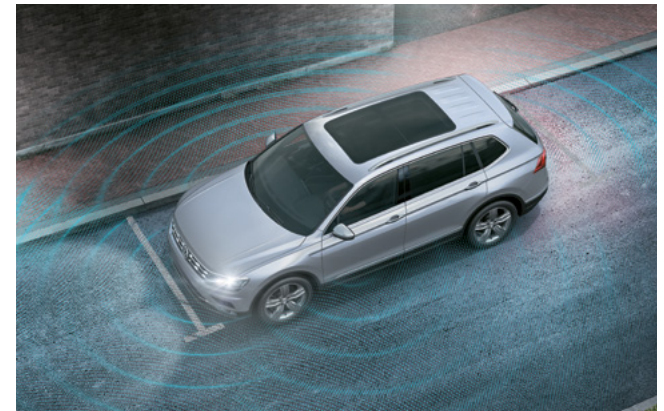
### Adaptive Cruise Control (ACC)\*

Available Adaptive Cruise Control (ACC) helps the vehicle maintain a preset speed and distance from the car in front of you. When activated, if the car in front of you speeds up or slows down, the sensors can detect the change and your car follows suit.



### Lane Keeping System (Lane Assist)\*

When moving, the available Lane Keeping System (Lane Assist) can sense if you start to drift into another lane without using the turn signal. Within the limits of the system, Lane Assist can help steer to help keep you in the current lane.



### Overhead View Camera (Area View)\*

The available Overhead View Camera (Area View) helps give you a better view of what is around your vehicle.



# Helps you stay out of trouble.

Peace of mind comes in different forms on the Tiguan with its multiple safety features. And it also comes with America's Best Bumper-to-Bumper Limited Warranty.\*



## Rear View Camera System

Benefit from the view of a wide lens when you want it. It can help you see obstacles when backing up, a feature so helpful you'll wonder how you ever managed without it.

## Safety cage

Front and rear crumple zones help absorb crash energy, while a rigid safety cage helps deflect it away from the driver and passengers.

## Automatic Post-Collision Braking System\*\*

Not every collision brings a car to a stop. That's why our vehicles include the Automatic Post-Collision Braking System. It can also help slow the vehicle down after a collision, helping reduce the chance of any additional impacts.

## Intelligent Crash Response System (ICRS)†

In the event of a collision that deploys the airbags†† the ICRS can turn off the fuel pump, unlock the doors, and activate the hazard lights. It helps react if you might not be able to.

## Seven stability-enhancing systems

From Electronic Brake-pressure Distribution (EBD), which helps maintain appropriate stopping power during a hard-braking situation, to Electronic Stability Control (ESC), which can adjust engine throttle and apply corrective forces to the wheels that need them most, your vehicle is equipped with a total of seven stability-enhancing systems.

\*6 years/72,000 miles (whichever occurs first) New Vehicle Limited Warranty on MY2018 and newer VW vehicles, excluding e-Golf. Claim based on manufacturers' published data on length and transferability of car and SUV Bumper-to-bumper/Basic warranty only. Not based on other separate warranties. See owner's literature or dealer for warranty exclusions and limitations. \*\*The features discussed are designed to help mitigate the effects of certain collisions, and are not a substitute for attentive driving. Please see Owner's Manual for further details, and important limitations. †The Intelligent Crash Response System (ICRS) will only activate in a collision where the airbags deploy or safety belt pretensioners activate. Not all collisions cause airbags to deploy or safety belt pretensioners to activate. ††Airbags are supplemental restraints only and will not deploy under all crash circumstances. Always use safety belts and seat children only in the rear, using restraint systems appropriate for their size and age.





# America's Best Bumper-to-Bumper Limited Warranty\*\*

## The People First Warranty\*

6 Years/72,000 Miles · Transferable  
Bumper-to-Bumper · Limited Warranty

Learn more at [vw.com/warranty](http://vw.com/warranty).

### Cost of ownership

The 6 years or 72,000 miles New Vehicle Limited Warranty reduces the cost of owning a Volkswagen†

### Peace of mind

Every Volkswagen is designed with quality in mind. So our 6 years/72,000 miles (whichever occurs first) New Vehicle Limited Warranty isn't just extensive, it's proof of our confidence.\*

### Coverage

You're covered by the warranty for 6 years or 72,000 miles (whichever comes first).\*

### The smart choice

Considering the length of the virtual bumper-to-bumper coverage and the ability to transfer the remainder of the coverage to the next owner, The People First Warranty beats the competition every time.\*

### Transferable

Your vehicle remains covered even if transferred to a new owner. So long as the vehicle is less than 6 years old and has traveled fewer than 72,000 miles, the remainder of the warranty coverage transfers to the subsequent vehicle owner.\*

### Bumper-to-Bumper Limited Warranty

In general, the warranty provides practically bumper-to-bumper coverage for repairs to correct a defect in manufacturer's material or workmanship (i.e., mechanical defects).\*

\*6 years/72,000 miles (whichever occurs first) New Vehicle Limited Warranty on MY2018 and newer vehicles, excluding e-Golf. Remainder of warranty coverage transfers to subsequent vehicle owner. See owner's literature or dealer for warranty exclusions and limitations. \*\*Claim based on manufacturers' published data on length and transferability of car and SUV/Bumper-to-bumper basic warranty only. Not based on other separate warranties. †Claim based on 5 years/75,000 miles cost of ownership analysis comparing 6 years/72,000 miles (whichever occurs first) limited warranty and 3 years/36,000 miles (whichever occurs first) limited warranty.



# Tiguan Specs

● Standard, no additional cost - Not available ○ Optional, additional cost

△ Later Availability with Jet Black R-Line **O4M** Optional on 4MOTION models **4MO** Available with 4MOTION models

**DAP** Available with Driver Assistance Pkg **PSP** Available with Panoramic Sunroof Pkg

EXTERIOR	S	SE	SEL	SEL R-LINE	SEL JET BLACK R-LINE	SEL PREM	SEL PREM R-LINE	TECHNOLOGY	S	SE	SEL	SEL R-LINE	SEL JET BLACK R-LINE	SEL PREM	SEL PREM R-LINE
LED headlights	-	-	-	-	-	●	●	Volkswagen Digital Cockpit	-	-	●	●	△	●	●
LED Daytime Running Lights (DRL)	●	●	●	●	△	●	●	Composition Color touchscreen sound system with 6.5" color display	●	-	-	-	-	-	-
Automatic headlights	●	●	●	●	△	●	●	Composition Media touchscreen sound system with 8" color display	-	●	-	-	-	-	-
Adaptive Front-lighting System (AFS)	-	-	-	-	-	●	●	Discover Media touchscreen navigation system with 8" color display	-	-	●	●	△	●	●
Foglights with low-speed corner-illuminating feature	-	-	●	●	△	●	●	Volkswagen Car-Net® App-Connect*	●	●	●	●	△	●	●
LED taillights	●	●	●	●	△	●	●	Volkswagen Car-Net® Security & Service with 6-month trial subscription**	-	-	●	●	△	●	●
Heated side mirrors	●	●	●	●	△	●	●	Volkswagen Car-Net® Guide & Inform with 3-month SiriusXM® Traffic trial subscription and 3-month SiriusXM Travel Link® trial subscription†	-	-	●	●	△	●	●
Black painted mirror caps	-	-	-	-	-	-	-	2 front USB data ports and 1 rear USB charging port	-	●	●	●	△	●	●
Black window trim and side sills	-	-	-	-	-	-	-	Fender® Premium Audio System	-	-	-	-	-	●	●
Black roof rails	●	●	-	-	△	-	-	SiriusXM® All Access with 3-month trial subscription†	-	●	●	●	△	●	●
Silver roof rails	-	-	●	●	-	●	●	Forward Collision Warning and Autonomous Emergency Braking (Front Assist)††	<b>DAP</b>	●	●	●	△	●	●
Power tilting/sliding panoramic sunroof	-	<b>PSP</b>	●	●	△	●	●	Pedestrian Monitoring (included in Front Assist)††	<b>DAP</b>	●	●	●	△	●	●
Remote opening and closing power liftgate	-	-	●	●	△	●	●	Blind Spot Monitor††	<b>DAP</b>	●	●	●	△	●	●
Hands-free Easy Open and Easy Close liftgate	-	-	-	-	-	●	●	Rear Traffic Alert††	<b>DAP</b>	●	●	●	△	●	●
R-Line front bumper and badging	-	-	-	●	-	-	●	Adaptive Cruise Control (ACC)††	-	-	●	●	△	●	●
R-Line front bumper and badging with black accents	-	-	-	-	△	-	-	Lane Keeping System (Lane Assist)††	-	-	-	-	-	●	●
Side mirrors with memory feature	●	-	-	-	-	-	-	High Beam Control (Light Assist)††	-	-	-	-	-	●	●
17" 10-spoke alloy wheels	●	-	-	-	-	-	-	Park Distance Control††	-	-	●	●	△	●	●
17" wide multi-spoke two-tone machined alloy wheels	-	●	-	-	-	-	-	Overhead View Camera (Area View)††	-	-	-	-	-	●	●
18" thin multi-spoke two-tone machined alloy wheels	-	-	●	-	-	-	-								
19" twin 5-spoke alloy wheels	-	-	●	-	-	-	-								
19" twin 5-spoke black alloy wheels	-	-	-	-	△	-	-								
19" 5-spoke gray alloy wheels	-	-	-	-	-	●	-								
20" two-tone machined alloy wheels	-	-	-	-	-	-	●								
INTERIOR	S	SE	SEL	SEL R-LINE	SEL JET BLACK R-LINE	SEL PREM	SEL PREM R-LINE	SAFETY	S	SE	SEL	SEL R-LINE	SEL JET BLACK R-LINE	SEL PREM	SEL PREM R-LINE
Cloth seating surfaces with quilted rhombus design	●	-	-	-	-	-	-	Rear View Camera System	●	●	●	●	△	●	●
V-Tex leatherette seating surfaces	-	●	●	●	△	-	-	LATCH (Lower Anchors and Tethers for Children) child seat anchor points	●	●	●	●	△	●	●
Leather seating surfaces	-	-	-	-	-	●	●	Anti-lock Braking System (ABS), Electronic Brake-pressure Distribution (EBD), and Hydraulic Brake Assist (HBA)	●	●	●	●	△	●	●
Heated front seats	-	●	●	●	△	●	●	Intelligent Crash Response System (ICRS)†	●	●	●	●	△	●	●
10-way power driver's seat including power-adjustable lumbar support	-	●	●	●	△	●	●	Tire Pressure Monitoring System (TPMS)	●	●	●	●	△	●	●
3-position memory function for driver's seat	-	-	-	-	-	●	●	Electronic Stability Control (ESC), Anti-Slip Regulation (ASR), Electronic Differential Lock (EDL), and Engine Brake Assist (EBA)	●	●	●	●	△	●	●
Multi-function steering wheel	●	-	-	-	-	-	-								
Leather-wrapped, multi-function steering wheel	-	●	●	●	-	●	●								
Leather-wrapped steering wheel with R-Line badge and stainless steel pedal caps	-	-	-	●	△	-	●								
Heated steering wheel	-	-	-	-	-	●	●								
Auto-dimming interior rearview mirror	-	-	-	-	-	●	●								
Climatronic® dual-zone automatic climate control	-	●	●	●	△	●	●								
7-seat configuration with 3rd-row seating	●/O4M	●/O4M	●/O4M	●/O4M	△/●/O4M	○	○	6-year/72,000-mile (whichever occurs first) New Vehicle Limited Warranty††	●	●	●	●	△	●	●
5-seat configuration	4MO	4MO	4MO	4MO	△/4MO	●	●	7-year/100,000-mile (whichever occurs first) Limited Warranty Against Corrosion Perforation††	●	●	●	●	△	●	●
40/20/40-split folding 2nd row	●	●	●	●	△	●	●	3-year/36,000-mile (whichever occurs first) Roadside Assistance‡	●	●	●	●	△	●	●
PERFORMANCE	S	SE	SEL	SEL R-LINE	SEL JET BLACK R-LINE	SEL PREM	SEL PREM R-LINE	QUALITY	S	SE	SEL	SEL R-LINE	SEL JET BLACK R-LINE	SEL PREM	SEL PREM R-LINE
2.0L TSI®, 16-valve, DOHC, in-line 4-cylinder turbocharged engine with intercooler and direct fuel injection; 184 hp, 221 lb-ft of torque	●	●	●	●	△	●	●								
8-speed automatic transmission with Tiptronic® and Sport mode	●	●	●	●	△	●	●								
Front-wheel drive	●	●	●	●	△	-	-								
4MOTION® all-wheel drive with Active Control	4MO	4MO	4MO	4MO	△/4MO	●	●								
PERFORMANCE	S	SE	SEL	SEL R-LINE	SEL JET BLACK R-LINE	SEL PREM	SEL PREM R-LINE	DIMENSIONS	S	SE	SEL	SEL R-LINE	SEL JET BLACK R-LINE	SEL PREM	SEL PREM R-LINE
Wheelbase								109.9 inches							
Length								185.1 inches							
Width								72.4 inches							
Height								65.3 inches							
Ground clearance								7.87 inches							
Cargo volume (5-passenger models)								37.6 cu. ft.							
Cargo volume with 2nd row folded down (5-seater models)								73.5 cu. ft.							
Cargo volume with 3rd row folded down (7-seater models)								33.0 cu. ft.							
Cargo volume with 2nd and 3rd rows folded down (7-seater models)								65.7 cu. ft.							

See next page for corresponding disclaimers.



# Colors and Wheels

## EXTERIOR COLORS



Pure White



Dark Moss Green Metallic



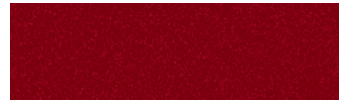
Habanero Orange Metallic



White Silver Metallic



Silk Blue Metallic



Cardinal Red Metallic



Platinum Gray Metallic



Deep Black Pearl

## INTERIOR CLOTH



Titan Black

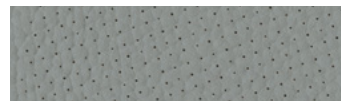


Storm Gray

## INTERIOR V-TEX LEATHERETTE

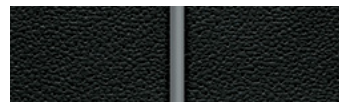


Titan Black

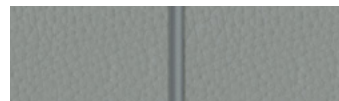


Storm Gray

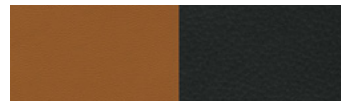
## INTERIOR LEATHER



Titan Black



Storm Gray



Golden Oak/Black



Saffrano Orange/Black

## WHEELS



17" 10-spoke alloy



17" wide multi-spoke two-tone machined alloy



18" thin multi-spoke two-tone machined alloy



19" 5-spoke gray alloy



19" twin 5-spoke alloy



19" twin 5-spoke black alloy (later availability)



20" two-tone machined alloy

Not all combinations of exterior paint and interior seating surfaces are available.

\*Always pay careful attention to the road, and do not drive while distracted. Not all features available on all operating systems. Standard text and data usage rates apply. App-Connect features require compatible device, operating system, and mobile apps. See mobile device and app providers for terms and privacy. \*\*Verizon Connect, Inc., is service provider of VW Car-Net Security & Service. Available on select models. Trial or paid subscription required. VW Car-Net Security & Service services require vehicle cellular connectivity and availability of vehicle GPS signal; certain services may collect location information. Standard text and data rates apply. See Terms of Service, Privacy Policy, and other details at [www.vw.com/carnet](http://www.vw.com/carnet). Always pay careful attention to the road, and do not drive while distracted. †Always pay careful attention to the road, and do not drive while distracted. SiriusXM audio and data services each require a subscription sold separately, or as a package, by Sirius XM Radio Inc. If you decide to continue service after your trial, the subscription plan you choose will automatically renew thereafter and you will be charged according to your chosen payment method at then-current rates. Fees and taxes apply. Please see the SiriusXM Customer Agreement at [www.siriusxm.com](http://www.siriusxm.com) for complete terms and how to cancel, which includes calling SiriusXM at 1-888-539-7474. All fees and programming are subject to change. ©2018 Sirius XM Radio Inc. SiriusXM and all related marks and logos are trademarks of Sirius XM Radio Inc. ††Driver Assistance features are not substitutes for attentive driving. See Owner's Manual for further details and important limitations. †The Intelligent Crash Response System (ICRS) will only activate in a collision where the airbags deploy or safety belt pretensioners activate. ††See dealer or owner's literature for limited warranty details. †Roadside Assistance provided by a third party.





# America's Best Bumper-to-Bumper Limited Warranty\*\*

## The People First Warranty\*

6 Years/72,000 Miles · Transferable Bumper-to-Bumper · Limited Warranty

An SUV as versatile as the Tiguan needs a warranty that can keep up with it. And this one fits the bill. It's America's Best Bumper-to-Bumper Limited Warranty, covering your vehicle for 6 years or 72,000 miles, whichever occurs first.



### ACCESSORIES†



Base Carrier Bars and URBAN LOADER®††‡



Side Window Deflector Kit — Tinted††‡‡



Remote Start‡§



MojoMats® with Tiguan Logo

\*6 years/72,000 miles (whichever occurs first) New Vehicle Limited Warranty on MY2018 and newer VW vehicles, excluding e-Golf. See owner's literature or dealer for warranty exclusions and limitations. \*\*Claim based on manufacturers' published data on length and transferability of car and SUV Bumper-to-Bumper/Basic warranty only. Not based on other separate warranties. †Genuine Volkswagen Accessories installed by an authorized Volkswagen dealer are covered for the greater of: (1) the accessory limited warranty period (12 months or 12,000 miles, whichever occurs first) from the time of purchase; or (2) the remainder of the New Vehicle Limited Warranty period. Non-genuine Volkswagen Accessories may be covered under separate manufacturer warranties, which can be found at VWAccessoriesWarranty.com. Visit VWAccessoriesWarranty.com or see participating Volkswagen dealer for complete details. ††Proper installation required. Professional installation may be recommended. See owner's literature and dealer for details. †‡All roof rack attachments require base carrier bars. All attachments sold separately. Recreational equipment not included. ‡Check local regulations concerning the use of side window deflectors. §See vehicle Owner's Manual for further details and important warnings about the keyless ignition feature. Do not leave vehicle unattended with the engine running, particularly in enclosed spaces.

©2018 Volkswagen Group of America, Inc. Printed in the USA. Volkswagen of America, Inc., believes the information and specifications in this brochure to be correct at the time of printing. Specifications, standard features, options, fabrics, and colors are subject to change without notice. Some features may be unavailable when your vehicle is built. Some vehicles are pictured with options that may be available at extra cost or may not be available on some models. Ask your dealer about the availability of options and verify that the vehicle you select includes the equipment you ordered. Tires are supplied and warranted by their manufacturer. "Volkswagen," the Volkswagen logo, "Climatronic," "4MOTION," and "Tiguan" are registered trademarks of Volkswagen AG. "Bluetooth" is a registered trademark of Bluetooth SIG, Inc. MojoMats® is a registered trademark of Volkswagen Group of America, Inc. URBAN LOADER® is a trademark of CalixKlippan AB. Volkswagen navigation depends on the signals from the worldwide Global Positioning Satellite network. The vehicle's electrical system, and existing wireless and satellite technologies, must be available and operating properly for the system to function. The system is designed to provide you with suggested routes to location addresses, destinations, and other points of interest. Changes in street names, construction zones, traffic flow, points of interest, and other road system changes are beyond the control of Volkswagen of America, Inc. Complete detailed mapping of lanes, roads, streets, toll roads, highways, etc., is not possible, therefore you may encounter discrepancies between the mapping and your actual location. Please rely on your individual judgment in determining whether or not to follow a suggested navigation route. Periodically, the mapping is updated and an update will be required in order to maintain the latest navigation information available to us. Updates will be available for purchase from time to time at additional cost. For further information regarding any Volkswagen model, please call 1-800-DRIVE-VW or just look us up at vw.com.